

Referierte Aufsätze *Refereed Journal Articles*

DIW Berlin – Deutsches Institut
für Wirtschaftsforschung
*DIW Berlin – German Institute
for Economic Research*
Mohrenstraße 58, 10117 Berlin
www.diw.de

2017

Information	3
Makroökonomie und Finanzmärkte <i>Macroeconomics and Financial Markets</i>	4
Makroökonomie <i>Macroeconomics</i>	5
Konjunkturpolitik <i>Forecasting and Economic Policy</i>	6
Weltwirtschaft <i>International Economics</i>	7
Nachhaltigkeit <i>Sustainability</i>	8
Energie, Verkehr, Umwelt <i>Energy, Transportation, Environment</i>	9
Klimapolitik <i>Climate Policy</i>	10
Industrieökonomie <i>Industrial Economics</i>	12
Unternehmen und Märkte <i>Firms and Markets</i>	13
Wettbewerb und Verbraucher <i>Competition and Consumers</i>	13
Öffentliche Finanzen und Lebenslagen <i>Public Finances and Living Conditions</i>	14
Staat <i>Public Economics</i>	15
Bildung und Familie <i>Education and Family</i>	15
Infrastruktureinrichtung Sozio-oekonomisches Panel <i>The Research Infrastructure SOEP</i>	16
Forschungsinfrastruktur <i>Research Infrastructure</i>	20
Vorstand <i>Executive Board</i>	22
Graduate Center	26

DIW Berlin – Deutsches Institut
für Wirtschaftsforschung
*DIW Berlin – German Institute
for Economic Research*
Mohrenstraße 58, 10117 Berlin
Deutschland

Tel.: + 49 (0) 30 8 97 89 - 0
Fax + 49 (0) 30 8 97 89 - 200
kundenservice@diw.de
www.diw.de

Redaktion/Editing: Anja Kehmeier
Design: Ann Katrin Siedenburg, www.katigraphie.de
Druck/Printed by: Kevin Schmitz

Bildnachweis/Photo Credits:
Cover: Florian Schuh, S. 2: Milena Schlösser,
S. 27: DIW Berlin

Berlin, Mai 2018

Als **referiert** gelten im DIW Berlin Zeitschriften, die im Social Sciences Citation Index (SSCI) oder im Science Citation Index Expanded (SCI Expanded) ausgewertet werden. Aufsätze in Zeitschriften, die nicht in den oben genannten Datenbanken aufgeführt werden, werden als Aufsätze in »sonstigen referierten Zeitschriften« eingordnet, wenn die Zeitschriften nachweisbar referiert sind.

*DIW Berlin considers journals to be **refereed** if they are listed in the Social Sciences Citation Index (SSCI) or in the Science Citation Index Expanded (SCI Expanded). Articles published in journals that are not listed in the aforementioned databases are listed under »other refereed journals« if the journals do indeed carry out a referee process.*

Alle Publikationen des DIW Berlin und von Mitarbeiterinnen und Mitarbeitern des DIW Berlin sind auch im Internet nachgewiesen unter **www.diw.de/publikationen**

Eine Übersicht aller Veröffentlichungen der Wissenschaftler und Wissenschaftlerinnen des DIW Berlin finden Sie unter **www.diw.de/mitarbeiter**

Die einzelnen Mitarbeiterseiten bieten einen Link auf die Liste der am DIW Berlin entstandenen Publikationen. In den meisten Fällen sind dort auch die Abstracts der jeweiligen Beiträge zu finden.

*All publications of DIW Berlin and of DIW Berlin scholars are listed on our website at **www.diw.de/publications***

*For an overview of publications of individual researchers at DIW Berlin, please see **www.diw.de/staff***

The individual staff members' pages each feature links to their work with us and, in most cases, you can also see abstracts from their respective contributions.

Makroökonomie und Finanzmärkte

Macroeconomics and Financial Markets

Das Cluster »Makroökonomie und Finanzmärkte« besteht aus der Forschungsabteilung Makroökonomie und den fokussierten Abteilungen Konjunkturpolitik und Weltwirtschaft. Allen Abteilungen ist eine quantitative empirische Ausrichtung auf Grundlage moderner ökonometrischer Methoden gemeinsam. Abhängig von der inhaltlichen Ausrichtung stützt sich die Arbeit eher auf mikro- oder makroökonomische Ansätze.

The work of the research cluster is geared towards political relevance. The cluster's scientific advisory activity specifically targets national, European and international economic and development policy. The »Macroeconomics and Financial Markets« research cluster consists of the research department Macroeconomics, the focus departments for Forecasting and Economic Policy and International Economics. All departments have a quantitative empirical orientation using modern econometric methods in common. Depending on the content, the work is based on either microeconomic or macroeconomic approaches.

Makroökonomie *Macroeconomics*

Im SSCI/SCI nachgewiesene Aufsätze
Articles listed in the SSCI/SCI

Austerity and Private Debt

Mathias Klein
In: *Journal of Money, Credit and Banking* 49 (2017), 7, S. 1555–1585

Capital Taxation and Government Debt Policy with Public Discounting

Malte Rieth
In: *Journal of Economic Dynamics & Control* 85 (2017), S. 1–20

Company Rating with Support Vector Machines

Rouslan A. Moro, Wolfgang K. Härdle, Dorothea Schäfer
In: *Statistics & Risk Modeling* 34 (2017), 1, S. 55–67

Decoupling Nominal and Real Rigidities: A Reexamination of the Canonical Model of Price Setting under Menu Costs

Philipp König, Alexander Meyer-Gohde
In: *Economics Letters* 156 (2017), S. 129–132

Determinants of Chinese Direct Investments in the European Union

Christian Dreger, Yun Schüler-Zhou, Margot Schüller
In: *Applied Economics* 49 (2017), 41, S. 4231–4240

Do Media Data Help to Predict German Industrial Production?

Konstantin A. Kholodilin, Dirk Ulbricht, Tobias Thomas
In: *Journal of Forecasting* 36 (2017), 5, S. 483–496

Long-Term Growth Perspectives in Japan and the Euro Area
Christian Dreger
In: *Asia Europe Journal* 15 (2017), 4, S. 363–375

Euro Area Government Bonds: Fragmentation and Contagion during the Sovereign Debt Crisis

Michael Ehrmann, Marcel Fratzscher
In: *Journal of International Money and Finance* 70 (2017), S. 26–44

Family Ownership: Does It Matter for Funding and Success of Corporate Innovations?

Dorothea Schäfer, Andreas Stephan, Jennifer Solórzano Mosquera
In: *Small Business Economics* 48 (2017), 4, S. 931–951

Granularity in Banking and Growth: Does Financial Openness Matter?

Franziska Bremus, Claudia M. Buch
In: *Journal of Banking & Finance* 77 (2017), S. 300–316

How Do Insured Deposits Affect Bank Risk? Evidence from the 2008 Emergency Economic Stabilization Act

Claudia Lambert, Felix Noth, Ulrich Schüwer
In: *Journal of Financial Intermediation* 29 (2017), S. 81–102

The Market Value of Energy Efficiency in Buildings and the Mode of Tenure

Claus Michelsen, Andreas Mense, Konstantin Kholodilin
In: *Urban Studies* 54 (2017), 14, S. 3218–3238

Quantifying a Century of State Intervention in Rental Housing in Germany

Konstantin A. Kholodilin
In: *Urban Research and Practice* 10 (2017), 3, S. 267–328

Risk Forecasting in (T)GARCH Models with Uncorrelated Dependent Innovations

Benjamin Beckers, Helmut Herwartz, Moritz Seidel

In: *Quantitative Finance* 17 (2017), 1, S. 121–137**Spillovers of U.S. Unconventional Monetary Policy to Emerging Markets: The Role of Capital Flows**

Pablo Anaya, Michael Hachula, Christian J. Offermanns

In: *Journal of International Money and Finance* 73 (2017), Part B, S. 275–295**Think National, Forecast Local: A Case Study of 71 German Urban Housing Markets**

Konstantin A. Kholodilin, Boriss Siliverstovs

In: *Applied Economics* 49 (2017), 42, S. 4271–4297**Konjunkturpolitik
Forecasting and Economic Policy**Im SSCI/SCI nachgewiesene Aufsätze
*Articles listed in the SSCI/SCI***Granularity in Banking and Growth: Does Financial Openness Matter?**

Franziska Bremus, Claudia M. Buch

In: *Journal of Banking & Finance* 77 (2017), S. 300–316**Do Media Data Help to Predict German Industrial Production?**

Konstantin A. Kholodilin, Dirk Ulbricht, Tobias Thomas

In: *Journal of Forecasting* 36 (2017), 5, S. 483–496**Spillovers of U.S. Unconventional Monetary Policy to Emerging Markets: The Role of Capital Flows**

Pablo Anaya, Michael Hachula, Christian J. Offermanns

In: *Journal of International Money and Finance* 73 (2017), Part B, S. 275–295**Empirics on the Long-Run Effects of Building Energy Codes in the Housing Market**

Makram El-Shagi, Claus Michelsen, Sebastian Rosenschon

In: *Land Economics* 93 (2017), 4, S. 585–607**The Market Value of Energy Efficiency in Buildings and the Mode of Tenure**

Claus Michelsen, Andreas Mense, Konstantin Kholodilin

In: *Urban Studies* 54 (2017), 14, S. 3218–3238In weiteren referierten Fachzeitschriften veröffentlichte Aufsätze
*Articles published in other refereed scholarly journals***Intangible Investments and International Business Cycles**

Guido Baldi, André Bodmer

In: *International Economics and Economic Policy* 14 (2017), 2, S. 211–219**Nur geringer haushaltspolitischer Spielraum trotz hoher Überschüsse**

Kristina van Deuverden

In: *Zeitschrift für Wirtschaftspolitik* 66 (2017), 1, S. 50–60**Weltwirtschaft
International Economics**Im SSCI/SCI nachgewiesene Aufsätze
*Articles listed in the SSCI/SCI***Credit Market Structure and Collateral in Rural Thailand**

Carmen Kislak, Lukas Menkhoff, Doris Neuberger

In: *Economic Notes* 46 (2017), 3, S. 587–632**Estimating Risky Behavior with Multiple-Item Risk Measures**

Lukas Menkhoff, Sahra Sakha

In: *Journal of Economic Psychology* 59 (2017), S. 59–86**Allais for the Poor: Relations to Ability, Information Processing, and Risk Attitudes**

Tabea Herrmann, Olaf Hübner, Lukas Menkhoff, Ulrich Schmidt

In: *Journal of Risk and Uncertainty* 54 (2017), 2, S. 129–156**Currency Value**

Lukas Menkhoff, Lucio Sarno, Maik Schmeling, Andreas Schrimpf

In: *The Review of Financial Studies* 30 (2017), 2, S. 416–441**Does Financial Education Impact Financial Literacy and Financial Behavior, and If So, When?**

Tim Kaiser, Lukas Menkhoff

In: *The World Bank Economic Review* 31 (2017), 3, S. 611–630

Nachhaltigkeit Sustainability

Das Cluster »Nachhaltigkeit« untersucht die ökonomischen Voraussetzungen und Folgen einer nachhaltigen Entwicklung. Im Vordergrund stehen Analysen der nachhaltigen Energieversorgung und Mobilität sowie des Klimaschutzes. Der Arbeitsbereich wird durch die Abteilung Energie, Verkehr, Umwelt (EVU) sowie die fokussierte Abteilung Klimapolitik getragen. Beide Abteilungen kooperieren bei Forschungs- und Beratungsprojekten sowie bei Veranstaltungen und internationalen Netzwerken.

The »Sustainability« research cluster examines the economic conditions and consequences of sustainable development. It focuses on analyzing sustainable energy supply and mobility, as well as climate protection. The cluster consists of the department of Energy, Transportation, Environment and the focus department of Climate Policy. Both departments cooperate in research and consulting projects as well as events and international networks.

Energie, Verkehr, Umwelt Energy, Transportation, Environment

Im SSCI/SCI nachgewiesene Aufsätze
Articles listed in the SSCI/SCI

Wind Power and Externalities

Alexander Zerrahn

In: *Ecological Economics* 141 (2017), S. 245–260

Prosumage of Solar Electricity: Pros, Cons, and the System Perspective

Wolf-Peter Schill, Alexander Zerrahn, Friedrich Kunz

In: *Economics of Energy and Environmental Policy* 6 (2017), 1, S. 7–31

Designing a Model for the Global Energy System – GENE SYS-MOD: An Application of the Open-Source Energy Modeling System (OSEMOSYS)

Konstantin Löffler, Karlo Hainsch, Thorsten Burandt, Pao-Yu Oei, Claudia Kemfert, Christian von Hirschhausen

In: *Energies* 10 (2017), 10, S. 1–28

Shaking Dutch Grounds Won't Shatter the European Gas Market

Franziska Holz, Hanna Brauers, Philipp M. Richter, Thorsten Roobek

In: *Energy Economics* 64 (2017), S. 520–529

Introduction of Nodal Pricing into the New Mexican Electricity Market through FTR Allocations

Friedrich Kunz, Juan Rosellón, Claudia Kemfert

In: *The Energy Journal* 38 (2017), 1, S. 157–172

OPEC, Saudi Arabia, and the Shale Revolution: Insights from Equilibrium Modelling and Oil Politics

Dawud Ansari

In: *Energy Policy* 111 (2017), S. 166–178

CO2 Emission Intensity and Exporting: Evidence from Firm-Level Data

Philipp M. Richter, Alexander Schiersch

In: *European Economic Review* 98 (2017), S. 373–391

Electrification of a City Bus Network: An Optimization Model for Cost-Effective Placing of Charging Infrastructure and Battery Sizing of Fast-Charging Electric Bus Systems

Alexander Kunith, Roman Mendelevitch, Dietmar Goehlich

In: *International Journal of Sustainable Transportation* 11 (2017), 10, S. 707–720

If You Choose Not to Decide, You Still Have Made a Choice

Francisco J. Bahamonde Birke, Isidora Navarro, Juan de Dios Ortúzar

In: *Journal of Choice Modelling* 22 (2017), S. 13–23

Analyzing the Continuity of Attitudinal and Perceptual Indicators in Hybrid Choice Models

Francisco J. Bahamonde-Birke, Juan de Dios Ortúzar

In: *Journal of Choice Modelling* 25 (2017), S. 28–39

Does the Presence of Wind Turbines Have Negative Externalities for People in Their Surroundings? Evidence from Well-Being Data

Christian Krekel, Alexander Zerrahn

In: *Journal of Environmental Economics and Management* 82 (2017), S. 221–238

Germany Must Go Back to Its Low-Carbon Future

Claudia Kemfert

In: *Nature* 549 (2017), 7670, S. 26–27

Start-up Costs of Thermal Power Plants in Markets with Increasing Shares of Variable Renewable Generation

Wolf-Peter Schill, Michael Pahle, Christian Gambardella

In: *Nature Energy* 2 (2017), 17050, 6 S.

Network Expansion to Mitigate Market Power

Alexander Zerrahn, Daniel Huppmann

In: *Networks and Spatial Economics* 17 (2017), 2, S. 611–644

Long-Run Power Storage Requirements for High Shares of Renewables: Review and a New Model

Alexander Zerrahn, Wolf-Peter Schill

In: *Renewable and Sustainable Energy Reviews* 79 (2017), S. 1518–1534

About Attitudes and Perceptions: Finding the Proper Way to Consider Latent Variables in Discrete Choice Models

Francisco J. Bahamonde-Birke, Uwe Kunert, Heike Link, Juan de Dios Ortúzar

In: *Transportation: Planning, Policy, Research, Practice* 44 (2017), 3, S. 475–493

Klimapolitik *Climate Policy*

Im SSCI/SCI nachgewiesene Aufsätze
Articles listed in the SSCI/SCI

The Impact of Wind Power Support Schemes on Technology Choices

Nils May

In: *Energy Economics* 65 (2017), S. 343–354

Bridging the Industrial Energy Efficiency Gap: Assessing the Evidence from the Italian White Certificate Scheme

Jan Stede

In: *Energy Policy* 104 (2017), S. 112–123

An Analysis of a Forward Capacity Market with Long-Term Contracts

Pradyumna C. Bhagwat, Anna Marcheselli, Jörn Richstein, Emile J.L. Chappin, Laurens J. de Vries

In: *Energy Policy* 111 (2017), S. 255–267

Simulating Climate and Energy Policy with Agent-Based Modelling: the Energy Modelling Laboratory (Emlab)

Emile J. L. Chappin, Laurens J. de Vries, Jörn Richstein, Pradyumna Bhagwat, Kaveri Iychettira, Salman Khan

In: *Environmental Modelling & Software* 96 (2017), S. 421–431

Environmental Policies and Productivity Growth: Evidence across Industries and Firms

Silvia Albrizio, Tomasz Kozluk, Vera Zipperer

In: *Journal of Environmental Economics and Management* 81 (2017), S. 209–226

Pricing and Capacity Provision in Electricity Markets: An Experimental Study

Chloé Le Coq, Henrik Orzen, Sebastian Schwenen

In: *Journal of Regulatory Economics* 51 (2017), 2, S. 123–158

Productivity Measurement with Natural Capital

Nicola Brandt, Paul Schreyer, Vera Zipperer

In: *The Review of Income and Wealth* 63 (2017), 1, S. 7–21

The Effectiveness of Capacity Markets in the Presence of a High Portfolio Share of Renewable Energy Sources

Pradyumna C. Bhagwat, Kaveri K. Iychettira, Jörn Richstein, Emile J.L. Chappin, Laurens J. de Vries

In: *Utilities Policy* 48 (2017), S. 76–91

Cross-Border Effects of Capacity Mechanisms in Interconnected Power Systems

Pradyumna C. Bhagwat, Jörn Richstein, Emile J.L. Chappin, Kaveri K. Iychettira, Laurens J. de Vries

In: *Utilities Policy* 46 (2017), S. 33–47

In weiteren referierten Fachzeitschriften veröffentlichte Aufsätze
Articles published in other refereed scholarly journals

Germany and Poland in the Energy Union: Moving from Controversies to Shared Interests?

Aleksandra Gawlikowska-Fyk, Kai-Olaf Lang, Karsten Neuhoff, Ellen Scholl, Kirsten Westphal

In: *European Energy Journal* 7 (2017), 2, S. 49–59

Energy Taxes, Reforms and Income Inequality: An Empirical Cross-Country Analysis

Walid Oueslati, Vera Zipperer, Damien Roussilière, Alexandros Dimitropoulos

In: *International Economics* 150 (2017), S. 80–95

Industrieökonomie Industrial Economics

Neben empirischen Untersuchungen zu insbesondere innovationsgetriebenen Veränderungen in den Wirtschafts- und Produktionsstrukturen werden mit Hilfe wettbewerbs- und verhaltensökonomischer Ansätze theoretische Aussagen über das Marktgeschehen hergeleitet und für die Bewertung verschiedener staatlicher Markteingriffe verwendet.

Das Cluster »Industrieökonomie« besteht aus den beiden Abteilungen Unternehmen und Märkte sowie Wettbewerb und Verbraucher.

In addition to empirical studies, theoretical statements about the market development are derived using approaches based on competition policy and behavioral economics. The empirical and theoretical findings are useful for evaluating the effect of various political instruments.

The »Industrial Economics« research cluster consists of the research department Firms and Markets and the research department Competition and Consumers.

Unternehmen und Märkte Firms and Markets

Im SSCI/SCI nachgewiesene Aufsätze
Articles listed in the SSCI/SCI

Market Power and Heterogeneous Pass-Through in German Electricity Retail
Tomaso Duso, Florian Szücs
In: *European Economic Review* 98 (2017), S. 354–372

CO2 Emission Intensity and Exporting: Evidence from Firm-Level Data
Philipp M. Richter, Alexander Schiersch
In: *European Economic Review* 98 (2017), S. 373–391

Effective Reminders
Giacomo Calzolari, Mattia Nardotto
In: *Management Science* 63 (2017), 9, S. 2915–2932

In weiteren referierten Fachzeitschriften veröffentlichte Aufsätze
Articles published in other refereed scholarly journals

Judicial Behavior and Devolution at the Privy Council
Sofia Amaral-Garcia, Nuno Garoupa
In: *Review of Law and Economics* 13 (2017), 3, 40 S.

Wettbewerb und Verbraucher Competition and Consumers

Im SSCI/SCI nachgewiesene Aufsätze
Articles listed in the SSCI/SCI

No Gender Difference in Willingness to Compete when Competing against Self
Coren L. Apicella, Elif E. Demiral, Johanna Mollerstrom
In: *The American Economic Review* 107 (2017), 5, S. 136–140

Information Acquisition in Vertical Relations
Pio Baake, Andreas Harasser, Friederike Heiny
In: *The B.E. Journal of Economic Analysis & Policy* 17 (2017), 1, 14 S.

Secondary Use of Personal Data: An Economic Analysis
Nicola Jentzsch
In: *European Journal of Law and Economics* 44 (2017), 1, S. 165–192

The Impact of Stress on Tournament Entry
Thomas Buser, Anna Dreber, Johanna Mollerstrom
In: *Experimental Economics* 20 (2017), 2, S. 506–530

Design of Reforms with Time-Inconsistent Voters
Jisoo Hwang, Johanna Mollerstrom
In: *Journal of Public Economic Theory* 19 (2017), 3, S. 748–761

Individual Risk Preferences and the Demand for Redistribution
Johanna Mollerstrom, Manja Gärtner, David Seim
In: *Journal of Public Economics* 153 (2017), S. 49–55

Richer (and Holier) than Thou? The Effect of Relative Income Improvements on Demand for Redistribution
Mounir Karadja, Johanna Mollerstrom, David Seim
In: *The Review of Economics and Statistics* 99 (2017), 2, S. 201–212

Öffentliche Finanzen und Lebenslagen *Public Finances and Living Conditions*

Im Cluster »Öffentliche Finanzen und Lebenslagen« werden die ökonomischen und sozialen Lebensverhältnisse in ihrem Wandel sowie Verteilungswirkungen, Anreizwirkungen und Verhaltenseffekte staatlichen Handelns untersucht. Im Fokus stehen empirische Analysen, die auf repräsentativen Mikrodaten aus dem Bereich der wissenschaftsgetragenen Dateninfrastruktur und der amtlichen Statistik basieren.

Das Cluster besteht aus der Abteilung Staat und der fokussierten Abteilung Bildung und Familie sowie der Infrastruktureinrichtung Sozio-oekonomisches Panel (SOEP).

Changing economic and social living conditions and the distributional effects, incentive effects and behavioral effects of government activity are investigated in the »Public Finances and Living Conditions« research cluster. The focus is on empirical analyses which are based on representative microdata from the official statistics or the scientifically supported data infrastructure. The research cluster consists of the department of Public Economics, the focus department for Education and Family and the Research Infrastructure Socio-Economic Panel Study (SOEP).

Staat *Public Economics*

Im SSCI/SCI nachgewiesene Aufsätze
Articles listed in the SSCI/SCI

Who Bears the Burden of Social Security Contributions in Germany? Evidence from 35 Years of Administrative Data
Kai-Uwe Müller, Michael Neumann
In: *De Economist* 165 (2017), 2, S. 165–179

Indirect Fiscal Effects of Long-Term Care Insurance
Johannes Geyer, Peter Haan, Thorben Korfhage
In: *Fiscal Studies* 38 (2017), 3, S. 393–415

Car Ownership and Hedonic Adaptation
Johannes Emmerling, Salmal Qari
In: *Journal of Economic Psychology* 61 (2017), S. 29–38

Pension Incentives and Early Retirement
Barbara Engels, Johannes Geyer, Peter Haan
In: *Labour Economics* 47 (2017), S. 216–231

Earnings Responses to Social Security Contributions
Michael Neumann
In: *Labour Economics* 49 (2017), S. 55–72

Will You Still Trust Me Tomorrow? The Causal Effect of Terrorism on Social Trust
Benny Geys, Salmal Qari
In: *Public Choice* 173 (2017), 4, S. 289–305

Crowding in Public Transport: Who Cares and Why?
Luke Haywood, Martin Koning, Guillaume Monchambert
In: *Transportation Research Part A: Policy and Practice* 100 (2017), S. 215–227

How Does Education Improve Cognitive Skills? Instructional Time versus Timing of Instruction
Sarah Dahmann
In: *Labour Economics* 47 (2017), S. 216–231

Bildung und Familie *Education and Family*

Im SSCI/SCI nachgewiesene Aufsätze
Articles listed in the SSCI/SCI

Compressing Instruction Time into Fewer Years of Schooling and the Impact on Student Performance
Mathias Huebener, Jan Marcus
In: *Economics of Education Review* 58 (2017), S. 1–14

Intended College Enrollment and Educational Inequality: Do Students Lack Information?
Frauke H. Peter, Vaishali Zambre
In: *Economics of Education Review* 60 (2017), S. 125–141

Involuntary Job Loss and Changes in Personality Traits
Silke Anger, Georg Camehl, Frauke Peter
In: *Journal of Economic Psychology* 60 (2017), S. 71–91

Who Is Minding the Kids? New Developments and Lost Opportunities in Reforming the British Early Education Workforce
Ludovica Gamaro
In: *Journal of European Social Policy* 27 (2017), 4, S. 320–331

Day-Care Availability, Maternal Employment and Satisfaction of Parents: Evidence from Cultural and Policy Variations in Germany
Pia S. Schober, Christian Schmitt
In: *Journal of European Social Policy* 27 (2017), 5, S. 433–446

Neighbourhood Turnover and Teenage Attainment

Stephen Gibbons, Olmo Silva, Felix Weinhardt
 In: *Journal of the European Economic Association* 15 (2017), 4, S. 746-783

Increased Instruction Hours and the Widening Gap in Student Performance

Mathias Huebener, Susanne Kuger, Jan Marcus
 In: *Labour Economics* 47 (2017), S. 15-34

Moving to a Better Place? Residential Mobility among Families with Young Children in the Millennium Cohort Study

Ludovica Gambaro, Heather Joshi, Ruth Lupton
 In: *Population, Space and Place* 23 (2017), 8, e2072, 14 S.

Infrastruktureinrichtung Sozio-oekonomisches Panel The Research Infrastructure SOEP

Im SSCI/SCI nachgewiesene Aufsätze
 Articles listed in the SSCI/SCI

The Long Arm of Childhood Circumstances on Health in Old Age: Evidence from SHARELIFE

Eduwin Pakpahan, Rasmus Hoffmann, Hannes Kröger
 In: *Advances in Life Course Research* 31 (2017), S. 1-10

Changes in Life Satisfaction when Losing One's Spouse: Individual Differences in Anticipation, Reaction, Adaptation and Longevity in the German Socio-Economic Panel Study (SOEP)

Frank J. Infurna, Maja Wiest, Denis Gerstorff, Nilam Ram, Jürgen Schupp, Gert G. Wagner, Jutta Heckhausen
 In: *Ageing and Society* 37 (2017), 5, S. 899-934

Reasonable Sample Sizes for Convergence to Normality

Carsten Schröder, Shlomo Yitzhaki
 In: *Communications in Statistics: Simulation and Computation* 46 (2017), 9, S. 7074-7087

Getting Together: Social Contact Frequency across the Life Span

Julia Sander, Jürgen Schupp, David Richter
 In: *Developmental Psychology* 53 (2017), 8, S. 1571-1588

Public Preferences for Alternative Electricity Mixes in Post-Fukushima Japan

Katrin Rehdanz, Carsten Schröder, Daiju Narita, Toshihiro Okubo
 In: *Energy Economics* 65 (2017), S. 262-270

Effort-Reward Imbalance at Work and Incident Coronary Heart Disease:

A Multi-Cohort Study of 90,164 Individuals
 Nico Dragano, Johannes Siegrist, Solja T. Nyberg, Thorsten Lunau, Eleonor I. Fransson, Lars Alfredsson, Jakob B Bjorner, Marianne Borritz, Hermann Burr, Raimund Erbel, Göran Fahlén, Marcel Goldberg, Mark Hamer, Katriina Heikkilä, Karl-Heinz Jöckel, Anders Knutsson, Ida E. H. Madsen, Martin L. Nielsen, Maria Nordin, Tuula Oksanen, Jan H. Pejtersen, Jaana Pentti, Reiner Rugulies, Paula Salo, Jürgen Schupp, Archana Singh-Manoux, Andrew Steptoe, Töres Theorell, Jussi Vahtera, Peter J. M. Westerholm, Hugo Westerlund, Marianna Virtanen, Marie Zins, G. David Batty, Mika Kivimäki
 In: *Epidemiology* 28 (2017), 4, S. 619-626

Revisiting the Evidence for Cardinal Treatment of Ordinal Variables

Carsten Schröder, Shlomo Yitzhaki
 In: *European Economic Review* 92 (2017), S. 337-358

Refuting the Cliché of the Distrustful Manager

Sabine Hommelhoff, David Richter
 In: *European Management Journal* 35 (2017), 2, S. 164-173

Children's Opportunities in Germany – An Application Using Multidimensional Measures

Charlotte Bartels, Maximilian Stockhausen
 In: *German Economic Review* 18 (2017), 3, S. 327-376

Fiscal Equalization and Tax Enforcement

Timm Bönke, Beate Jochimsen, Carsten Schröder
 In: *German Economic Review* 18 (2017), 3, S. 377-409

Replikationen, Reputation und gute wissenschaftliche Praxis

Benedikt Fecher, Mathis Fräßdorf, Marcel Hebing, Gert G. Wagner
 In: *Information, Wissenschaft & Praxis* 68 (2017), 2, S. 154-158

Terminal Decline in Well-Being Differs between Residents in East Germany and West Germany

Nina Vogel, Denis Gerstorff, Nilam Ram, Jan Goebel, Gert G. Wagner
 In: *International Journal of Behavioral Development* 41 (2017), 1, S. 115-126

The Linked Employer-Employee Study of the Socio-Economic Panel (SOEP-LEE): Content, Design and Research Potential

Michael Weinhardt, Alexia Meyerermann, Stefan Liebig, Jürgen Schupp
 In: *Jahrbücher für Nationalökonomie und Statistik* 237 (2017), 5, S. 457-467

Does the Presence of Wind Turbines Have Negative Externalities for People in Their Surroundings? Evidence from Well-Being Data

Christian Krekel, Alexander Zerrahn
 In: *Journal of Environmental Economics and Management* 82 (2017), S. 221-238

Day-Care Availability, Maternal Employment and Satisfaction of Parents: Evidence from Cultural and Policy Variations in Germany

Pia S. Schober, Christian Schmitt
 In: *Journal of European Social Policy* 27 (2017), 5, S. 433-446

The Emotional Timeline of Unemployment: Anticipation, Reaction, and Adaptation

Christian von Scheve, Friederike Esche, Jürgen Schupp
 In: *Journal of Happiness Studies* 18 (2017), 4, S. 1231-1254

Distributive and Poverty-Reducing Effects of In-Kind Housing Benefits in Europe: With a Case Study for Germany
Gerlinde Verbist, Markus M. Grabka
In: *Journal of Housing and the Built Environment* 32 (2017), 2, S. 289-312

Long-Term Effects of an Extensive Cognitive Training on Personality Development
Julia Sander, Florian Schmiedek, Annette Brose, Gert G. Wagner, Jule Specht
In: *Journal of Personality* 85 (2017), 4, S. 454-463

Cognitive Skills, Non-cognitive Skills, and Family Background: Evidence from Sibling Correlations
Silke Anger, Daniel D. Schnitzlein
In: *Journal of Population Economics* 30 (2017), 2, S. 591-620

FFTrees: A Toolbox to Create, Visualize, and Evaluate Fast-And-Frugal Decision Trees
Nathaniel D. Phillips, Hansjörg Neth, Jan K. Woike, Wolfgang Gaissmaier
In: *Judgment and Decision Making* 12 (2017), 4, S. 344-368

Marginal Employment for Welfare Recipients: Stepping Stone or Obstacle?
Torsten Lietzmann, Paul Schmelzer, Jürgen Wiemers
In: *Labour* 31 (2017), 4, S. 394-414

Data Sharing as a Social Dilemma: Influence of the Researcher's Personality
Stephanie Linek, Benedikt Fecher, Sascha Friesike, Marcel Hebing
In: *PloS one* 12 (2017), 8, 24 S.

Growing up with a Single Mother and Life Satisfaction in Adulthood: A Test of Mediating and Moderating Factors
David Richter, Sakari Lemola
In: *PloS one* 12 (2017), 6, 15 S.

»What Else Are You Worried about?« – Integrating Textual Responses into Quantitative Social Science Research
Julia M. Rohrer, Martin Brümmer, Stefan C. Schmukle, Jan Goebel, Gert G. Wagner
In: *PloS one* 12 (2017), 7, 34 S.

The Informed Consent to Record Linkage in Panel Studies: Optimal Starting Wave, Consent Refusals, and Subsequent Panel Attrition
Philipp Eisnecker, Martin Kroh
In: *The Public Opinion Quarterly* 81 (2017), 1, S. 131-143

Measuring the Consistency of Cross-Sectional and Longitudinal Income Information in EU-SILC
Kristina Krell, Joachim R. Frick, Markus M. Grabka
In: *The Review of Income and Wealth* 63 (2017), 1, S. 30-52

A Comparison of Intergenerational Mobility Curves in Germany, Norway, Sweden, and the US
Espen Bratberg, Jonathan Davis, Bhashkar Mazumder, Martin Nybom, Daniel D. Schnitzlein, Kjell Vaage
In: *The Scandinavian Journal of Economics* 119 (2017), 1, S. 72-101

In Search of Features that Constitute an »Enriched Environment« in Humans: Associations between Geographical Properties and Brain Structure
Christian Krekel, Jan Goebel, Henry Wüstemann, Sandra Düzel, Peter Eibich, Simone Kühn
In: *Scientific Reports* 7 (2017), 8 S.

The Stratifying Role of Job Level for Sickness Absence and the Moderating Role of Gender and Occupational Gender Composition
Hannes Kröger
In: *Social Science & Medicine* 186 (2017), S. 1-9

Einkommensunterschiede in der Mortalität in Deutschland – Ein empirischer Erklärungsversuch
Hannes Kröger, Martin Kroh, Lars Eric Kroll, Thomas Lampert
In: *Zeitschrift für Soziologie* 46 (2017), 2, S. 124-146

In weiteren referierten Fachzeitschriften veröffentlichte Aufsätze
Articles published in other refereed scholarly journals

Zunehmende Armut in Deutschland: Empirisch gesichertes Faktum oder Mythos?
Marco Giesselmann, Laura Luekemann
In: *Gesellschaft, Wirtschaft, Politik* 66 (2017), 1, S. 71-81

Die Integration Geflüchteter in der Vergangenheit: Spracherwerb und Arbeitsmarkteinbindung
Martin Kroh, Zerrin Salikutluk, Diana Schacht, Elisabeth Liebau, Johannes Giesecke
In: *Gesellschaft, Wirtschaft, Politik* 66 (2017), 1, S. 29-35

The PIAAC Longitudinal Study in Germany: Rationale and Design
Beatrice Rammstedt, Silke Martin, Anouk Zabal, Claus Carstensen, Jürgen Schupp
In: *Large-Scale Assessment in Education* 5 (2017), 11 S.

A Reputation Economy: How Individual Reward Considerations Trump Systemic Arguments for Open Access to Data
Benedikt Fecher, Sascha Friesike, Marcel Hebing, Stephanie Linek
In: *Palgrave Communications* 3 (2017), S. 1-10

Forschungsinfrastruktur Research Infrastructure

Die Abteilung Forschungsinfrastruktur setzt sich aus den Servicebereichen Bibliothek und Informationstechnik zusammen und hat die Aufgabe, die Forschung durch Bereitstellung der nötigen Infrastruktur zu fördern sowie sie mit den notwendigen Services zu versorgen. Die Abteilung, die auch einen Programmbereich im Programmbudget bildet, stellt die organisatorische und technische Infrastruktur für die Dokumentation und Präsentation von Forschungsergebnissen zur Verfügung.

The Research Infrastructure department combines the service departments Library and Information Technology. The department's function is to support the institute's research by providing necessary infrastructure and services. The department, which also constitutes a program area in the program budget, allocates organizational and technical infrastructure for the documentation and presentation of research results.

Im SSCI/SCI nachgewiesene Aufsätze
Articles listed in the SSCI/SCI

**Open Access, Innovation, and Research
Replikationen, Reputation und gute
wissenschaftliche Praxis**

Benedikt Fecher, Mathis Fräßdorf,
Marcel Hebing, Gert G. Wagner
In: *Information, Wissenschaft & Praxis* 68 (2017),
2, S. 154–158

A Nod to Public Open Access Infrastructures

Benedikt Fecher, Sascha Friesike, Gert G. Wagner
In: *Science* 356 (2017), 6344, S. 1242

In weiteren referierten Fachzeitschriften
veröffentlichte Aufsätze
*Articles published in other refereed scholarly
journals*

**14 Years of PID Services at the German
National Library of Science and Technology
(TIB): Connected Frameworks, Research Data
and Lessons Learned from a National Research
Library Perspective**

Angelina Kraft, Britta Dreyer, Peter Löwe,
Frauke Ziedorn
In: *Data Science Journal* 16 (2017), 10 S.

**A Reputation Economy: How Individual
Reward Considerations Trump Systemic
Arguments for Open Access to Data**

Benedikt Fecher, Sascha Friesike, Marcel Hebing,
Stephanie Linek

In: *Palgrave Communications* 3 (2017), 17051,
S. 1–10

Vorstand Executive Board

Der Vorstand hat die Aufgabe, die strategische und organisatorische Ausrichtung des DIW Berlin zu gestalten und optimale Rahmenbedingungen für die Kernaufgaben des Instituts zu schaffen: Forschung, Politikberatung, Nachwuchsförderung und Infrastrukturbereitstellung. Zu diesem Zweck sind die beiden wissenschaftlichen Vorstandsmitglieder selbst wissenschaftlich aktiv. Im Vorstandsbereich sind zwei Forschungsgruppen verankert: Gender Studies analysiert die wirtschaftliche, soziale und kulturelle Bedeutung der Geschlechter. Nachhaltige Entwicklung (bis 2016 Abteilung Entwicklung und Sicherheit) untersucht die Wirkung von Politikmaßnahmen auf die Lebensqualität von Menschen in Entwicklungs- und Transformationsländern.

The Executive Board is responsible for structuring the strategic and organizational orientation of DIW Berlin and creating the optimal framework for the Institute's core tasks: research, policy consulting, promoting young talent, and the provision of infrastructure. For this purpose, the two scientific members of the Executive Board continue to engage in research activities.

Two research groups are integrated into the Executive Board: The Gender Studies Research Group identifies and analyzes the economic, social, and cultural differences between men and women as well as the driving forces behind these disparities.

The Sustainable Development Research Group (known as the Development and Security Department until 2016) focuses on policy measures that are aimed at strengthening the resilience of households in the face of extreme weather events.

Im SSCI/SCI nachgewiesene Aufsätze
Articles listed in the SSCI/SCI

Changes in Life Satisfaction when Losing One's Spouse: Individual Differences in Anticipation, Reaction, Adaptation and Longevity in the German Socio-Economic Panel Study (SOEP)
Frank J. Infurna, Maja Wiest, Denis Gerstorf, Nilam Ram, Jürgen Schupp, Gert G. Wagner, Jutta Heckhausen
In: *Ageing and Society* 37 (2017), 5, S. 899-934

Making Work Pay: Increasing Labour Supply of Secondary Earners in Low Income Families with Children
Anna Kurowska, Michal Myck, Katharina Wrohlich
In: *Contemporary Economics* 11 (2017), 2, S. 161-170

Terminal Decline in Well-Being: The Role of Multi-Indicator Constellations of Physical Health and Psychosocial Correlates
Andreas M. Brandmaier, Gert G. Wagner, Nilam Ram, Denis Gerstorf
In: *Developmental Psychology* 53 (2017), 5, S. 996-1012

The Role of Morbidity for Proxy-Reported Well-Being in the Last Year of Life
Katharina Gerlach, Nilam Ram, Frank J. Infurna, Nina Vogel, Gert G. Wagner, Denis Gerstorf
In: *Developmental Psychology* 53 (2017), 9, S. 1795-1809

Civil Liberties vs. Security: Why Citizens Accept or Reject Digital Security Measures
Mathias Bug, Sebastian Bukow
In: *German Politics* 26 (2017), 2, S. 292-313

Replikationen, Reputation und gute wissenschaftliche Praxis
Benedikt Fecher, Mathis Fräßdorf, Marcel Hebing, Gert G. Wagner
In: *Information, Wissenschaft & Praxis* 68 (2017), 2, S. 154-158

Terminal Decline in Well-Being Differs between Residents in East Germany and West Germany
Nina Vogel, Denis Gerstorf, Nilam Ram, Jan Goebel, Gert G. Wagner
In: *International Journal of Behavioral Development* 41 (2017), 1, S. 115-126

Immigrant Occupational Composition and the Earnings of Immigrants and Natives in Germany: Sorting or Devaluation?
Boris Heizmann, Anne Busch-Heizmann, Elke Holst
In: *International Migration Review* 51 (2017), 2, S. 475-505

Food Intake and the Role of Food Self-Provisioning
Katharina Lehmann-Uchner, Kati Krähnert
In: *Journal of Development Studies* 53 (2017), 8, S. 1303-1322

Euro Area Government Bonds: Fragmentation and Contagion during the Sovereign Debt Crisis
Michael Ehrmann, Marcel Fratzscher
In: *Journal of International Money and Finance* 70 (2017), S. 26-44

Long-Term Effects of an Extensive Cognitive Training on Personality Development
Julia Sander, Florian Schmiedek, Annette Brose, Gert G. Wagner, Jule Specht
In: *Journal of Personality* 85 (2017), 4, S. 454-463

The Impact of Extreme Weather Events on Education
Valeria Groppo, Kati Krähnert
In: *Journal of Population Economics* 30 (2017), 2, S. 433-472

»What Else Are You Worried about?« – Integrating Textual Responses into Quantitative Social Science Research
Julia M. Rohrer, Martin Brümmer, Stefan C. Schmukle, Jan Goebel, Gert G. Wagner
In: *PLoS one* 12 (2017), 7, 34 S.

Can Facts Trump Unconditional Trust? Evidence-Based Information Halves the Influence of Physicians' Non-Evidence-Based Cancer Screening Recommendations

Odette Wegwarth, Gert G. Wagner, Gerd Gigerenzer
In: *PloS one* 12 (2017), 8, 12 S.

Levels of and Changes in Life Satisfaction Predict Mortality Hazards: Disentangling the Role of Physical Health, Perceived Control, and Social Orientation

Gizem Hülür, Jutta Heckhausen, Christiane A. Hoppmann, Frank J. Infurna, Gert G. Wagner, Nilam Ram, Denis Gerstorf
In: *Psychology and Aging* 32 (2017), 6, S. 507-520

A Nod to Public Open Access Infrastructures

Benedikt Fecher, Sascha Friesike, Gert G. Wagner
In: *Science* 356 (2017), 6344, S. 1242

Do Entrepreneurs Really Earn Less?

Alina Sorgner, Michael Fritsch, Alexander Kritikos
In: *Small Business Economics* 49 (2017), 2, S. 251-272

In weiteren referierten Fachzeitschriften veröffentlichte Aufsätze
Articles published in other refereed scholarly journals

Immer wieder Lohnnebenkosten:

Anmerkungen zu deren verschiedenen Rollen
Gert G. Wagner
In: *Sozialer Fortschritt* 66 (2017), 5, S. 351-358

Arbeitszeiten und Arbeitszeitwünsche: Unterschiede zwischen Mikrozensus und SOEP

Martina Rengers, Julia Bringmann, Elke Holst
In: *Wirtschaft und Statistik* (2017), 4, S. 11-43



Graduate Center

Das DIW Graduate Center (GC) ist ein Kompetenzzentrum zur Ausbildung und Förderung von NachwuchswissenschaftlerInnen am DIW Berlin. Herausragenden DoktorandInnen aus aller Welt bietet es ein vierjähriges strukturiertes Promotionsstudium in Volkswirtschaftslehre. In enger Kooperation mit den Berliner Universitäten erhalten die Promovierenden eine Ausbildung mit anspruchsvollem Vorlesungsprogramm. Sie arbeiten mit den Forschungsabteilungen des DIW Berlin zusammen, sammeln im Rahmen von Praktika wertvolle internationale Erfahrungen und lernen, Politik und Wirtschaft zu beraten.

The DIW Graduate Center's four-year program includes one year of course work at an international academic level followed by a three-year research phase. The first year includes a challenging and multifaceted lecture series. During the research phase, students join various research departments to prepare for a range of career paths, both in the academic sphere as well as in research-based policy advising.

Im SSCI/SCI nachgewiesene Aufsätze
Articles listed in the SSCI/SCI

Information Acquisition in Vertical Relations
Pio Baake, Andreas Harasser, Friederike Heiny
In: *The B.E. Journal of Economic Analysis & Policy* 17 (2017), 1, 14 S.

Estimation of Structural Vector Autoregressive Models
Helmut Lutkepohl
In: *Communications for Statistical Applications and Methods* 24 (2017), 5, S. 421–441

Compressing Instruction Time into Fewer Years of Schooling and the Impact on Student Performance
Mathias Huebener, Jan Marcus
In: *Economics of Education Review* 58 (2017), S. 1–14

Intended College Enrollment and Educational Inequality: Do Students Lack Information?
Frauke H. Peter, Vaishali Zambre
In: *Economics of Education Review* 60 (2017), S. 125–141

The Impact of Wind Power Support Schemes on Technology Choices
Nils May
In: *Energy Economics* 65 (2017), S. 343–354

OPEC, Saudi Arabia, and the Shale Revolution: Insights from Equilibrium Modelling and Oil Politics
Dawud Ansari
In: *Energy Policy* 111 (2017), S. 166–178

Bridging the Industrial Energy Efficiency Gap: Assessing the Evidence from the Italian White Certificate Scheme
Jan Stede
In: *Energy Policy* 104 (2017), S. 112–123

Structural Vector Autoregressions with Smooth Transition in Variances
Helmut Lutkepohl, Aleksei Netsunajev
In: *Journal of Economic Dynamics & Control* 84 (2017), S. 43–57

Involuntary Job Loss and Changes in Personality Traits
Silke Anger, Georg Camehl, Frauke Peter
In: *Journal of Economic Psychology* 60 (2017), S. 71–91

Environmental Policies and Productivity Growth: Evidence across Industries and Firms
Silvia Albrizio, Tomasz Kozluk, Vera Zipperer
In: *Journal of Environmental Economics and Management* 81 (2017), S. 209–226

Does the Presence of Wind Turbines Have Negative Externalities for People in Their Surroundings? Evidence from Well-Being Data
Christian Krekel, Alexander Zerrahn
In: *Journal of Environmental Economics and Management* 82 (2017), S. 221–238

Spillovers of U.S. Unconventional Monetary Policy to Emerging Markets: The Role of Capital Flows
Pablo Anaya, Michael Hachula, Christian J. Offermanns
In: *Journal of International Money and Finance* 73 (2017), Part B, S. 275–295

Increased Instruction Hours and the Widening Gap in Student Performance
Mathias Huebener, Susanne Kuger, Jan Marcus
In: *Labour Economics* 47 (2017), S. 15–34

**Risk Forecasting in (T)GARCH Models
with Uncorrelated Dependent Innovations**

Benjamin Beckers, Helmut Herwartz,
Moritz Seidel

In: *Quantitative Finance* 17 (2017), 1,
S. 121–137

**Productivity Measurement
with Natural Capital**

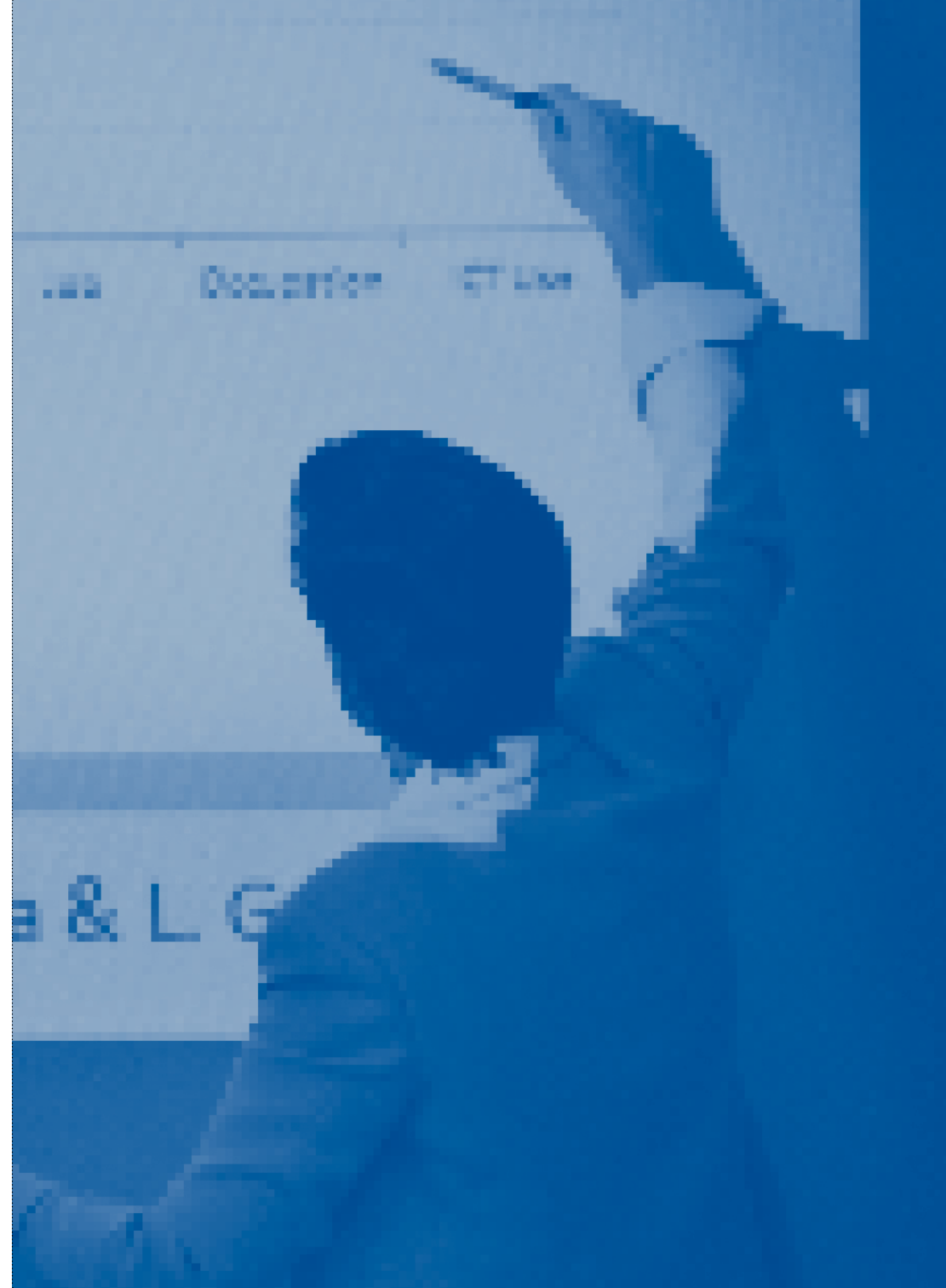
Nicola Brandt, Paul Schreyer, Vera
Zipperer

In: *The Review of Income and Wealth*
63 (2017), 1, S. 7–21

In weiteren referierten Fachzeitschriften
veröffentlichte Aufsätze
*Articles published in other refereed scholarly
journals*

**Structural Vector Autoregressions with
Heteroskedasticity: A Review of Different
Volatility Models**

Helmut Lütkepohl, Aleksei Netsunajev
In: *Econometrics and Statistics* 1 (2017),
S. 2–18



Wirtschaft. Politik. Wissenschaft.

Das DIW Berlin (Deutsches Institut für Wirtschaftsforschung) ist seit 1925 eines der führenden Wirtschaftsforschungsinstitute in Deutschland. Es erforscht wirtschafts- und sozialwissenschaftliche Zusammenhänge in gesellschaftlich relevanten Themenfeldern und berät auf dieser Grundlage Politik und Gesellschaft. Das Institut ist national und international vernetzt, stellt weltweit genutzte Forschungsinfrastruktur bereit und fördert den wissenschaftlichen Nachwuchs. Das DIW Berlin ist unabhängig und wird als Mitglied der Leibniz-Gemeinschaft überwiegend aus öffentlichen Mitteln finanziert.

Economics. Policy. Research.

Founded in 1925, DIW Berlin (the German Institute for Economic Research) is one of the leading economic research institutes in Germany. The Institute analyzes the economic and social aspects of topical issues, formulating and disseminating policy advice based on its research findings. DIW Berlin is part of both the national and international scientific communities, provides research infrastructure to academics all over the world, and promotes the next generation of scientists. A member of the Leibniz Association, DIW Berlin is independent and primarily publicly funded.

