

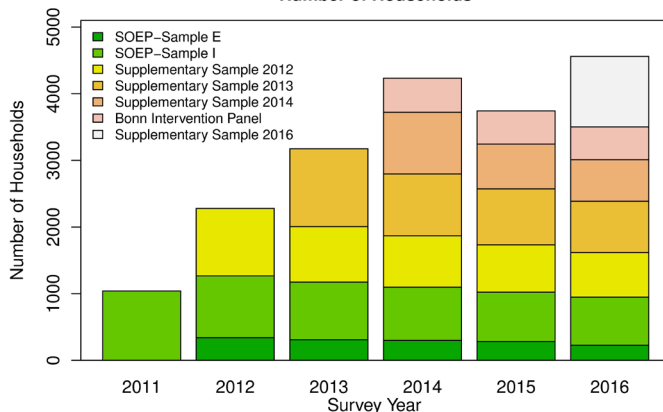
Scope – What SOEP-IS Offers

- Representative sample of private households.
- Adequate sample size for high-quality data analysis.
- Longitudinal data from existing SOEP subsamples.
- Open for innovative procedures that go beyond the classic survey components (IAT, DRM, experiments).
- Tool to test new survey methodologies beyond the limits of the SOEP pretests.
- Cross-references and linkages to the topics and content of the main SOEP survey.

Structure of SOEP-IS

- Two existing subsamples of the SOEP:
 - Sample E – first surveyed in 1998, originally 1,056 hh.
 - Sample I – first surveyed in 2009, originally 1,531 hh.
- Existing longitudinal data will expand the potential for analysis of innovative questions.
- Supplementary Sample in 2012: 1,000 hh.
- Supplementary Sample in 2013: 1,000 hh.
- Supplementary Sample in 2014: 1,000 hh.
- Supplementary Sample in 2016: 1,000 hh.
- Total Sample in 2016: > 7,000 respondents in > 4,500 households.

Sample Composition of SOEP-IS
Number of Households



Survey Contents & Instruments

- Integrated questionnaire (household, all adult household members, biography, information on children).
- Set of core questions, 45 % of the main SOEP
- Additional topics are added, i.e., sets of questions that are asked only at specific intervals.
- The inclusion additional topics is oriented toward the rotation scheme of the main SOEP as well as toward the innovative modules in the particular survey wave.

Selection Procedure

- SOEP Survey Management decides on every proposal after review by expert in the respective field.
- SOEP Survey Committee decides on the main experimental issues and innovativeness of the proposal.

Data Distribution

- All SOEP data are freely available to **all** researchers (scientific open access).
- This also applies to:
 - all of the different sets of questions and experiments submitted by external applicants.
 - data collected with funding from external sources.
- Data will be made publicly available **no later than one year** after the SOEP-IS applicant has received the data.

Distribution of Data Collection 2011-2015

- Data are available since 04/2017
- Data are provided in long-format, only.
- New challenges for user-friendly documentation.
 - Questionnaires with links to variables and data sets.
 - Codebooks with additional information for all data sets.
 - Full inclusion in new SOEP info.
 - CAPI-screenshots are provided on request.

Call for Proposals for Data Collection 2019

- Call for 2019 will be sent out with SOEPnewsletter and is distributed to different list-servers and journals (announcement sections)
- Fieldwork will start in September and end in December 2019.
- Researchers should contact SOEP Survey Management with a project outline by November 30, 2018, at the latest
- Deadline for submissions: December 31, 2018
- Decision and feedback to applicant by end of April 2019

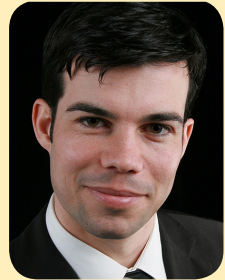
Your Contact Person

Dr. David Richter

Tel.: +49 30 89789-413

Fax: +49 30 89789-109

email: drichter@diw.de



Please find further information here:

<http://www.diw.de/soep-is>



Innovative Modules Surveyed

- Implicit Association Test of Gender Stereotypes and Explicit Measurement of Gender Stereotypes
- Justice Sensitivity
- Pension Claims

2011

- Adaptive Test of Environmental Behavior
- Control Strivings
- Day Reconstruction Method (DRM)
- Expected Financial Market Earnings
- Fear of Dementia
- GeNECA (Just Sustainable Development Based on the Capability Approach)
- Implicit Association Test of Self-Esteem and Explicit Measurement of Self-Esteem
- Loneliness & Depression

2012

- Assessment of Sleep Characteristics
- Conspiracy Mentality
- Day Reconstruction Method (DRM)
- Factorial Survey on Job Preferences and Job Offer Acceptance
- Job Task Survey
- Mobility & Identity
- Narcissism
- Socio-Economic Effects of Physical Activity

2013

- Cross-Cultural Study of Happiness and Personality
- Day Reconstruction Method (DRM)
- Determinants of Attitudes to Income Redistribution
- Expected Financial Market Earnings
- Experience Sampling Method (ESM)
- Finding Efficient Question Format for Long List Questions
- Flourishing State
- Inattentive Blindness
- Individual & Age Differences in Decisions from Description and Experience
- Justice Sensitivity
- Lottery Play: Expenditure, Frequency, and Explanatory Variables
- Major Life Events
- Measurement of Self-Evaluation and Overconfidence in Different Life Domains
- Separating Systematic Measurement Error Components Using MTMM
- Short Form of the "CHAOS" Scale

2014

- Big Five Development
- Day Reconstruction Method (DRM)
- Finding Efficient Question Format for Long List Questions
- Narcissism
- Outsourcing of Personal and Household Services
- Private or Public Health Care
- Preference for Leisure
- Financial Crises in the EU
- Happiness App
- Impostor Phenomenon
- Interviewer Effects in f2f Surveys
- Emotion Regulation
- Accuracy in Couples
- Living Apart Together (LAT)
- Grit and Entrepreneurship
- Ostracism Short Scale
- Sickness Presenteeism
- Socio-Economic Effects of Physical Activity
- Smartphone Use
- Stress & Epigenetics

2015

SOEP

Innovation Sample



SOEP-IS is well suited to short-term experiments, but it is particularly useful for long-term surveys that are not possible in the framework of the core SOEP—whether because the instruments are not yet established or because the questions deal with very specific research issues. Project ideas that have already been approved are (complex) economic behavioral experiments, Implicit Association Tests (IAT) and complex procedures to measure time use (Day Reconstruction Method, DRM).

Last Update: February 2018